

EAN:	4013288223340	Size:	370x30x28 mm
Part number:	05136422001	Weight:	174 g
Article number:	9602	Country of origin:	CN
		Customs tariff number:	39269097

- Magnetic rail with secure socket mounting and yet easy removal (twist-to-unlock) for temporary attachment on wall, shelf or workshop trolley
- Smooth rotary mechanism for a secure hold and easy access of the tools
- Empty, for up to 10 sockets, 1/2"

1 socket rail, empty. For up to 10 sockets and/or bit sockets with 1/2" drive. The rail allows temporary attachment to metallic surfaces and, with its twist-to-unlock function, ensures secure locking and unlocking of the sockets.

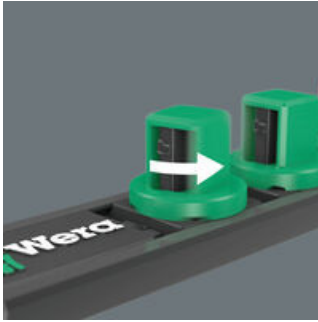
Web link
<https://www.wera.de/en/05136422001>

Wera - 9602
05136422001 - 4013288223340

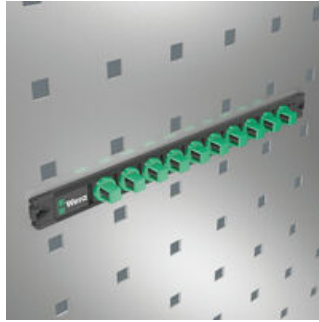
Wera Werkzeuge GmbH
Korzter Straße 21-25
D-42349 Wuppertal
Tel: +49 (0)2 02 / 40 45-0
E-Mail: info@wera.de

Twist-to-unlock mechanism

Magnetic

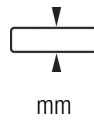


With its twist-to-unlock mechanism, the socket rail ensures easy access of the sockets. At the same time the sockets are held securely.



Thanks to the magnet, the rail is suitable for temporary attachment to the wall, shelf or workshop trolley.

Further versions in this product family:



mm



mm

05136422001

30.0

370.0

Web link

<https://www.wera.de/en/05136422001>

Wera - 9602

05136422001 - 4013288223340

Wera Werkzeuge GmbH

Korzerter Straße 21-25

D-42349 Wuppertal

Tel: +49 (0)2 02 / 40 45-0

E-Mail: info@wera.de