



EAN:	4013288193773	Size:	320x50x50 mm
Part number:	05075651001	Weight:	554 g
Article number:	Click-Torque X 1	Country of origin:	TW
		Customs tariff number:	82041100

- For 9x12 mm interchangeable insert tools.
- Easy setting and saving of the desired torque value with audible and tactile clicks when reaching the scale values
- Audible and tactile release mechanism when the set torque value is reached
- Measuring range: 2.5-25 Nm; precision $\pm 4\%$ as per DIN EN ISO 6789-1:2017-07
- Very robust design with ergonomic 2-component handle suitable for right and left-handed use

Click-Torque wrench in the unmistakable, robust Wera design with high accuracy as per DIN EN ISO 6789-1: 2017-07. Easy setting and saving of the default value. The audible and tactile clicks on reaching the scale values also facilitate the safe setting of the desired torque value. The robust release mechanism guarantees a clearly audible and tactile release signal when the set torque is reached. For right-hand and left-hand use and with 9x12mm insert square for the insertion of insert tools.

Web link

<https://www.wera.de/en/05075651001>

Wera - Click-Torque X 1
05075651001 - 4013288193773

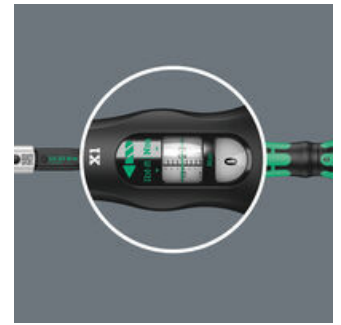
Wera Werkzeuge GmbH
Korzter Straße 21-25
D-42349 Wuppertal
Tel: +49 (0)2 02 / 40 45-0
E-Mail: info@wera.de

Click-Torque Wrench series

Drive 9x12 mm

Exact

Easy and safe



We wanted working with torque wrenches to be simple and accurate which is why we developed the Click-Torque wrenches. With the ability to set and save the default values and with the unmistakable, robust Wera design, these torque wrenches are the ideal tools for all bolting applications that require torque-controlled tightening (clockwise torque wrenches) and tightening and loosening (torque wrenches for insert tools).

For 9x12 mm interchangeable insert tools.

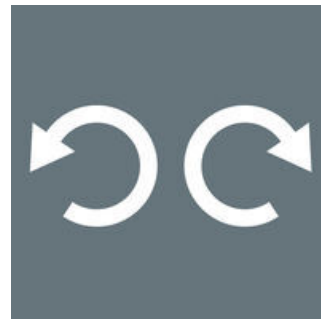
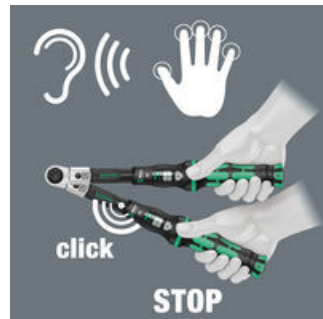
Precision of $\pm 4\%$ as per DIN EN ISO 6789-1:2017-07.

Easy setting and saving of the desired torque value; easy to read on main and fine scales.

Setting with Speed

Release mechanism

For right and left direction



With audible and tactile locking when the scale values are reached.

On reaching the desired torque value, an audible and tactile mechanism is triggered.

The Click-Torque wrenches for insert tools are suitable for clockwise and counterclockwise uses.

Web link

<https://www.wera.de/en/05075651001>

Wera - Click-Torque X 1

05075651001 - 4013288193773

Wera Werkzeuge GmbH

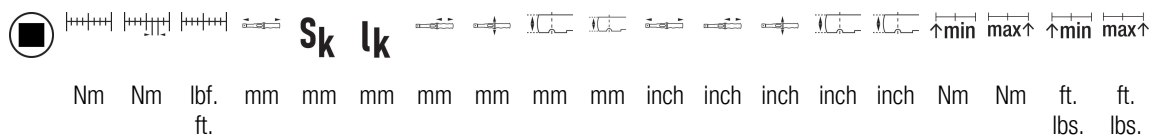
Korzter Straße 21-25

D-42349 Wuppertal

Tel: +49 (0)2 02 / 40 45-0

E-Mail: info@wera.de

Further versions in this product family:



	Nm	Nm	lbf. ft.	mm	mm	mm	mm	mm	mm	mm	mm	mm	inch	inch	inch	inch	inch	Nm	Nm	ft. lbs.	ft. lbs.
05075651001 ¹⁾	9x1 2	2.5- 25	0.10 1-1 8	292	17.5	240. 0	121	42	24	20	11 9	4 49	1 21	15/1	25/3	2	2.5	25.0	1.0	18.0	
													/64"	/64"	/32"	6"	2"				

1) S_k = Actual dimension of the test attachment; l_k = Distance from the force application point to the test device axis

Web link
<https://www.wera.de/en/05075651001>

Wera - Click-Torque X 1
 05075651001 - 4013288193773

Wera Werkzeuge GmbH
 Korzter Straße 21-25
 D-42349 Wuppertal
 Tel: +49 (0)2 02 / 40 45-0
 E-Mail: info@wera.de