

<b>EAN:</b>	4013288224088	<b>Size:</b>	235x120x100 mm
<b>Part number:</b>	05004841001	<b>Weight:</b>	2976 g
<b>Article number:</b>	8790 C Impaktor Deep Set 1	<b>Country of origin:</b>	TW
		<b>Customs tariff number:</b>	82042000

- Long ½" socket wrenches for low-lying couplings in confined spaces und protruding thread rods
- For use with electric or pneumatic wrenches with 12.5 mm = 1/2" drive
- Impaktor technology for above-average service life
- Hexagon profile allows precise and profile-friendly screwdriving with high power transmission
- With cross hole and ring socket to attach the safety pin and safety ring of machine operated tools
- With Take it easy tool finder: colour coding by size

Set with 11 Impaktor Deep sockets for use with electric or pneumatic wrenches with 12.5 mm = 1/2" drive. Long design for low-lying couplings and protruding thread rods. The Impaktor technology ensures a higher-than-average service life even at extreme requirements. The hexagon profile used allows a high power transmission while simultaneously being precise and protecting the profile. With Take it easy tool finder with colour coding by size - for quick and easy identification of the required tool .

#### Web link

<https://www.wera.de/en/05004841001>

Wera - 8790 C Impaktor Deep Set 1  
05004841001 - 4013288224088

Wera Werkzeuge GmbH  
Korzter Straße 21-25  
D-42349 Wuppertal  
Tel: +49 (0)2 02 / 40 45-0  
E-Mail: [info@wera.de](mailto:info@wera.de)

**For electric or pneumatic wrenches**



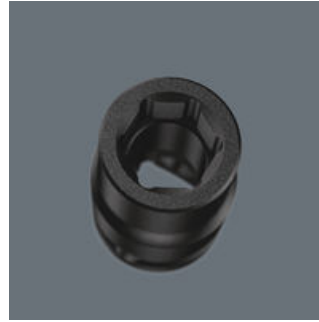
The extremely robust forged design ensures higher-than-average service life of the Impaktor sockets even at extreme requirements.

**Long design**



Thanks to the long design of the sockets, even couplings in tight spaces can be reached. Screwdriving at protruding thread rods can also be possible.

**Profile-friendly power transmission**



The hexagon profile offers the transmission of high forces and loads the edges of the bolt or the screw head less than a double hexagon profile. Fine-toothed ratchets also make use of a double hexagon profile superfluous, even in confined spaces, thanks to their small return angle.

**Cross hole and ring socket**



Thanks to the hole and the ring socket, the tools can be held securely on the power tool with a safety pin or an O-ring.

**Secure hold and easy removal**



The all new smooth turning mechanism guarantees both secure and rattle-free storage, yet allows easy removal of the tool.

**Take it easy tool finder system**



Take it easy tool finder system - with profile and size colour-coding for quick and easy tool selection. Colour-coded system for hexagon drive screws (L-Keys, Zyklus bit sockets), external hex drive screws and nuts (Joker wrenches, Zyklus sockets and Zyklus bit sockets with holding function), and TORX® drive screws (L-Keys, Zyklus bit sockets).

**Web link**

<https://www.wera.de/en/05004841001>

Wera - 8790 C Impaktor Deep Set 1  
05004841001 - 4013288224088

Wera Werkzeuge GmbH  
Korzter Straße 21-25  
D-42349 Wuppertal  
Tel: +49 (0)2 02 / 40 45-0  
E-Mail: [info@wera.de](mailto:info@wera.de)

Set contents:

8790 C Impaktor Deep socket with 1/2" drive, 13 x 83 mm



05004830001	1x	13 x 83 mm
05004831001	1x	14 x 83 mm
05004832001	1x	15 x 83 mm
05004833001	1x	16 x 83 mm
05004834001	1x	17 x 83 mm
05004835001	1x	18 x 83 mm
05004836001	1x	19 x 83 mm
05004837001	1x	21 x 83 mm
05004838001	1x	22 x 83 mm
05004839001	1x	24 x 83 mm
05004840001	1x	27 x 83 mm

Web link

<https://www.wera.de/en/05004841001>

Wera - 8790 C Impaktor Deep Set 1  
05004841001 - 4013288224088

Wera Werkzeuge GmbH  
Korzter Straße 21-25  
D-42349 Wuppertal  
Tel: +49 (0)2 02 / 40 45-0  
E-Mail: [info@wera.de](mailto:info@wera.de)