

<b>EAN:</b>	4013288144638	<b>Size:</b>	180x60x16 mm
<b>Part number:</b>	05073230001	<b>Weight:</b>	126 g
<b>Article number:</b>	8001 A SB	<b>Country of origin:</b>	TW
		<b>Customs tariff number:</b>	82041100

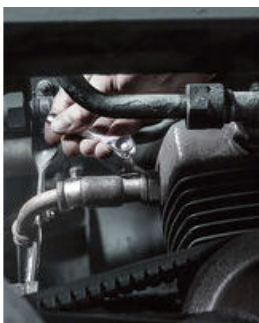
- Suitable for direct take-up of bits with 1/4" hex head drive
- Drop-forged, full-steel design
- Torque of over 65 Nm
- Fine-pitched ratchet mechanism and small return angle of 6°
- Ideal for working in confined spaces

The Wera Mini ratchet. Simple operation, even with just one hand, in confined working spaces. Drop-forged, full-steel design and fine-pitched mechanism with 60 teeth that allows a small return angle of 6° for precise working. The thumbwheel allows rapid fastening in confined situations when there is no space for ratcheting. Easy left/right switchover. Ergonomically designed ratchet head and lever. Suitable for 1/4" bit and socket take-up.

**The Zyklop Mini Ratchets**

**The Zyklop Mini**

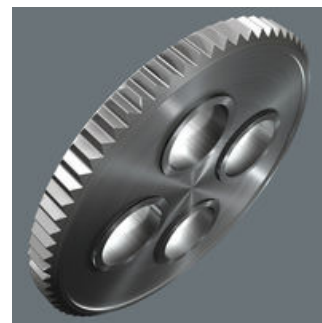
**Rapid screwdriving**



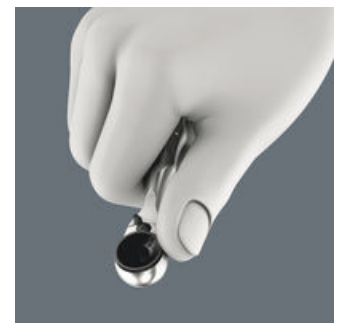
Zyklop Mini



For all difficult-to-access applications.



The fine tooth mechanism, with its 60 teeth, allows a small return angle of only 6° - ideal for precision work.



Thumbwheel enables rapid screwdriving, even when there isn't sufficient room for ratcheting use.

**Web link**

<https://www.wera.de/en/05073230001>

Wera - 8001 A SB

05073230001 - 4013288144638

Wera Werkzeuge GmbH

Korzter Straße 21-25

D-42349 Wuppertal

Tel: +49 (0)2 02 / 40 45-0

E-Mail: [info@wera.de](mailto:info@wera.de)

**Simple direction change**



Simple switching between left/right operations.

**Slim design**



Its slim design makes it ideal for all particularly confined working situations.

**Is such a small tool sufficiently resilient?**



The Zyklop Mini 1 can withstand a torque up to 65 Nm. That is far more power than can normally be transferred to such a small tool.

**What parts can be connected to the Zyklop Mini 1?**



Bits and sockets. Bits can be connected directly. However, a holder can be connected first and then the bit can be attached to this. This then serves as an extension with a free-turning sleeve. An adaptor e.g. Wera 870/1 is needed for sockets - 1/4" hexagonal on a square - 1/4" drive (included in the Bit-Check and with the individual Zyklop Mini 1 in the set).

**Web link**

<https://www.wera.de/en/05073230001>

Wera - 8001 A SB

05073230001 - 4013288144638

Set contents:

8001 A Bit Ratchet 1/4", 1/4" x 87 mm



1x 1/4" x 87 mm



870/1 Adaptor, 1/4" x 25 mm



0513600001<sup>1)</sup>

1x 1/4" x 25 mm



1) With friction ball; for manual nut spinner sockets

Web link

<https://www.wera.de/en/05073230001>

Wera - 8001 A SB

05073230001 - 4013288144638

Wera Werkzeuge GmbH

Korzter Straße 21-25

D-42349 Wuppertal

Tel: +49 (0)2 02 / 40 45-0

E-Mail: [info@wera.de](mailto:info@wera.de)