

Bicycle Set 3 A, 40 pieces



EAN: 4013288234933
Part number: 05004188001
Article number: Bicycle Set 3 A 2025

Size: 210x105x65 mm
Weight: 750 g
Country of origin: CZ
Customs tariff number: 82079030

- Compact 38-piece bike tool set in a pouch for the workshop and on tour
- Tool-Check with green locking elements to secure the tools
- With a small soft pouch to take individual tools with you
- With chain riveter and chain fastener with exchangeable rivet pin for opening and closing bicycle chains. Suitable for single-speed chains, up to 12-speed
- Tools for the most popular screw profiles on road bikes, mountain bikes and e-bikes
- Including two tyre levers with additional functionality - allowing the take up of 1/4" screwdriver bits
- Robust, surface-friendly, compact low weight textile pouch

Web link
<https://www.wera.de/en/05004188001>

Wera - Bicycle Set 3 A 2025
05004188001 - 4013288234933

Wera Werkzeuge GmbH
Korzterter Straße 21-25
D-42349 Wuppertal
Tel: +49 (0)2 02 / 40 45-0
E-Mail: info@wera.de

Bike tool set with ratchet, bits, sockets and a bitholding screwdriver in the very compact Tool-Check. Perfect as a universal companion for a multitude of screwdriving applications. An added extra: The set comes with two pouches- a larger pouch for the complete tool set and a small soft pouch to store the tools safely in your shirt pocket when you are on the go. The soft pouch has additional loops for holding two CO₂ cartridges (the cartridges are not included).

With useful bike tools (chain riveter and chain fastener) to repair bike chains.

Premium bitholding screwdriver with Kraftform Plus handle for comfortable ergonomic screwdriving. Bit ratchet for quick working when screwdriving with a machine or conventional hand tool is not possible due to space constraints. Rapid reversing from clockwise to counterclockwise rotation and vice versa via the reversing lever. The knurling on the ratchet head allows for quick rotation (with the thumb). Easiest operation, even with just one hand. Ergonomic ratchet head/lever: Kraftform geometry with perfectly shaped contact surfaces for the fingers. The direct bit mounting in the ratchet head provides small tool design for low working heights. Small return angle of 6° for precise working. Robust drop-forged solid steel design. Torques of over 65 Nm. The Rapidaptor bitholding screwdriver with fast-rotating sleeve: Can be used as an extension, for lightning-fast bit changes for even very small bit sizes with just one hand and without any extra tools.

Bits (BTZ) with BiTorsion zone to cushion peak loads for universal use; tough bits (Z) for universal use.

Zyklop sockets with colour coding by size as well as size stamping - to help you find the required socket quickly and easily. Slip-proof thanks to the knurling at the rear end for easy handling even with oily hands. With ball stop groove. For external hexagon bolts and screws. Made of matte chrome-plated chrome-vanadium.

With the glass fibre reinforced plastic tyre levers, the tyres can be safely levered off the rim without damaging the rim. One tyre lever with valve ejector, one tyre lever with ¼" bit mounting.

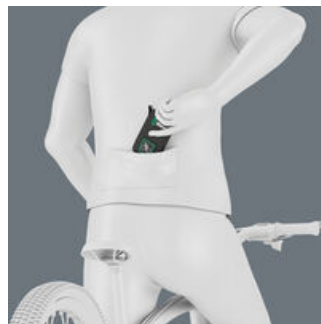
The Bicycle Set 3 a

Safely stored

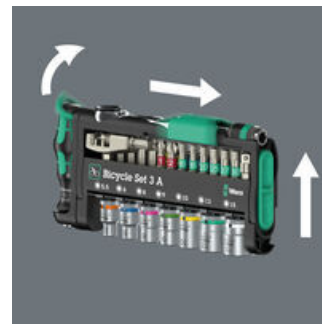
Ideal for working in confined spaces



The Bicycle Set 3 a



The Bicycle Set 3 A is the practical assortment for independently carrying out assembly work and repairs on road bikes, mountain bikes and e-bikes. Particularly practical: one small case with zip to take individual tools with you in your jersey pocket. Less weight on bike tours.



The green locking components of the Tool-Check secure the tool reliably during transport. At the same time, they are easy to operate and allow quick access to the tools.



With their extremely compact design, the Zyklop Mini ratchets are particularly suitable for all hard-to-reach applications.

Web link

<https://www.wera.de/en/05004188001>

Wera - Bicycle Set 3 A 2025
05004188001 - 4013288234933

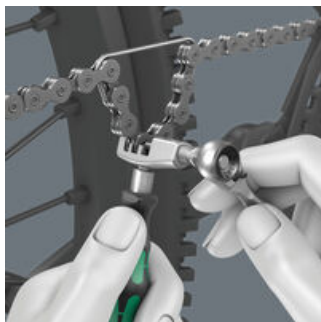
Wera Werkzeuge GmbH
Korzter Straße 21-25
D-42349 Wuppertal
Tel: +49 (0)2 02 / 40 45-0
E-Mail: info@wera.de

Bit ratchet also for sockets



1/4" sockets can also be used with the Zyklop Mini bit ratchet by connecting the 870/1 adapter (1/4" hexagon to 1/4" square head).

Chain tools



With the included chain tools, chains can be loosened and reconnected; for opening and closing bicycle chains. Suitable for single-speed chains, up to 12-speed.

The tyre lever 9502 with bit mounting



The 1/4" hexagon mounting in the tyre lever 9502 allows mounting of a 1/4" bit. In this way, light screw connections can be conducted.

The tyre lever 9503



The tyre lever 9503 can be used as a valve ejector for Schläverand (French) valves and as a bleeder valve for car valves.

Web link

<https://www.wera.de/en/05004188001>

Wera - Bicycle Set 3 A 2025
05004188001 - 4013288234933

Wera Werkzeuge GmbH
Korzter Straße 21-25
D-42349 Wuppertal
Tel: +49 (0)2 02 / 40 45-0
E-Mail: info@wera.de

Set contents:

8001 A Bit Ratchet 1/4", 1/4" x 87 mm



1x 1/4" x 87 mm



813 Bitholding screwdriver, 1/4" x 78 mm



05051274001

1x 1/4" x 78 mm



3899/4/1 Universal holder, stainless steel, 1/4" x 100 mm



1x 1/4" x 100 mm



889/4/1 K Rapidaptor Universal Bit Holder, 1/4" x 50 mm



05052502001

1x 1/4" x 50 mm



870/1 Adaptor, 1/4" x 25 mm



05136000001¹⁾

1x 1/4" x 25 mm

1) With friction ball; for manual nut spinner sockets



851/1 BTZ bits, PH 1 x 25 mm



05056420001

1x PH 1 x 25 mm

05056422001

1x PH 2 x 25 mm



867/1 BTZ TORX® bits, TX 10 x 25 mm



05066120001

1x TX 10 x 25 mm

05066122001

1x TX 15 x 25 mm

05066124001

1x TX 20 x 25 mm

05066126001

1x TX 25 x 25 mm

05066127001

1x TX 27 x 25 mm

05066128001

1x TX 30 x 25 mm



800/1 BTZ bits, 0.5 x 4 x 25 mm



1x 0.5 x 4 x 25 mm

1x 0.6 x 4.5 x 25 mm



840/1 BTZ bits, 2 x 25 mm



05056681001

1x 2 x 25 mm

05056682001

1x 2.5 x 25 mm

05056683001

1x 3 x 25 mm

05056684001

1x 4 x 25 mm

05056685001

1x 5 x 25 mm

05056687001

1x 6 x 25 mm



Web link

<https://www.wera.de/en/05004188001>

Wera - Bicycle Set 3 A 2025

05004188001 - 4013288234933

Wera Werkzeuge GmbH

Korzerter Straße 21-25

D-42349 Wuppertal

Tel: +49 (0)2 02 / 40 45-0

E-Mail: info@wera.de

840/1 Z bits, 8 x 25 mm



05056335001 1x 8 x 25 mm

842/1 Z bits, 2.5 x 25 mm



05056350001 1x 2.5 x 25 mm
 05056352001 1x 3 x 25 mm
 05056354001 1x 4 x 25 mm
 05056356001 1x 5 x 25 mm
 05056358001 1x 6 x 25 mm

8790 HMA Zyklus 1/4" socket, 5.5 x 23 mm



05003504001 1x 5.5 x 23 mm
 05003505001 1x 6 x 23 mm
 05003507001 1x 8 x 23 mm
 05003509001 1x 10 x 23 mm
 05003512001 1x 13 x 23 mm
 05003499001 1x 15 x 23 mm
 05003508001 1x 9 x 23 mm

9502 Tyre jack with bit mounting, 105 mm



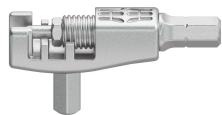
1x 105 mm

9503 Tyre jack with valve ejector, 105 mm



1x 105 mm

9513 Chain Tool



1x 9513 Chain Tool

9512 Chain-Hook



1x 9512 Chain-Hook

9481 Tool pouch, 203 x 85 mm



1x 203 x 85 mm

Web link

<https://www.wera.de/en/05004188001>

Wera - Bicycle Set 3 A 2025
 05004188001 - 4013288234933

Wera Werkzeuge GmbH
 Korzter Straße 21-25
 D-42349 Wuppertal
 Tel: +49 (0)2 02 / 40 45-0
 E-Mail: info@wera.de

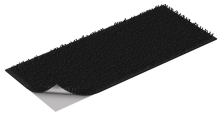
9480 Case with zip, 90 x 135 mm

1x 90 x 135 mm



Hook and Loop Fastener Strip 120, 120 x 50 mm

1x 120 x 50 mm



Web link

<https://www.wera.de/en/05004188001>

Wera - Bicycle Set 3 A 2025
05004188001 - 4013288234933

Wera Werkzeuge GmbH
Korzter Straße 21-25
D-42349 Wuppertal
Tel: +49 (0)2 02 / 40 45-0
E-Mail: info@wera.de