

Click-Torque C 1 torque wrench with reversible ratchet, 10-50 Nm, 1/2" x 10-50 Nm



EAN:	4013288193216	Size:	395x60x60 mm
Part number:	05075620001	Weight:	1075 g
Article number:	Click-Torque C 1	Country of origin:	TW
		Customs tariff number:	82041100

- With 1/2" square head drive, reversible ratchet, 45 teeth
- Easy setting and saving of the desired torque value with audible and tactile clicks when reaching the scale values
- Audible and tactile release mechanism when the set torque value is reached
- Measuring range: 10-50 Nm; precise to $\pm 3\%$ as per DIN EN ISO 6789-1:2017-07
- With ergonomic 2-component handle suitable for right-hand use

Click-Torque wrench in the unmistakable, robust Wera design with high accuracy as per DIN EN ISO 6789-1: 2017-07. Easy setting and saving of the default value. The audible and tactile clicks on reaching the scale values also facilitate the safe setting of the desired torque value. The robust release mechanism guarantees a clearly audible and tactile release signal when the set torque is reached. For right-hand use (clockwise torque-control) and with 45-tooth reversible ratchet mechanism.



Web link
<https://www.wera.de/en/05075620001>

Wera - Click-Torque C 1
05075620001 - 4013288193216

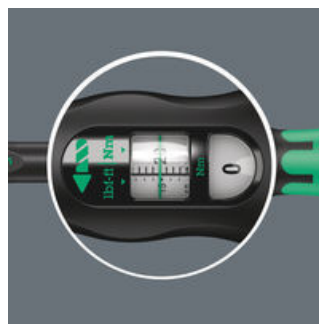
Wera Werkzeuge GmbH
Korzter Straße 21-25
D-42349 Wuppertal
Tel: +49 (0)2 02 / 40 45-0
E-Mail: info@wera.de

Click-Torque Wrench series

Exact

Easy and safe

Setting with Speed



We wanted working with torque wrenches to be simple and accurate which is why we developed the Click-Torque wrenches. With the ability to set and save the default values and with the unmistakable, robust Wera design, these torque wrenches are the ideal tools for all bolting applications that require torque-controlled tightening (clockwise torque wrenches) and tightening and loosening (torque wrenches for insert tools).

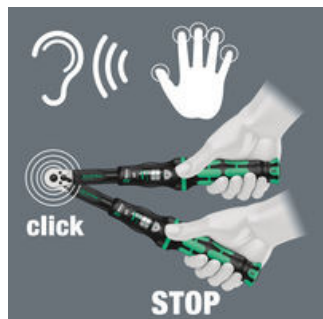
Precision of $\pm 3\%$ as per DIN EN ISO 6789-1:2017-07.

Easy setting and saving of the desired torque value; easy to read on main and fine scales.

With audible and tactile locking when the scale values are reached.

Release mechanism

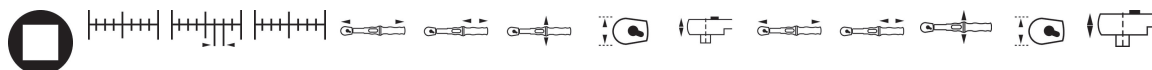
For right-handed use



On reaching the desired torque value, an audible and tactile mechanism is triggered.

The reversible Click-Torque wrenches are for right-handed use.

Further versions in this product family:



	inch	Nm	Nm	lbf. ft.	mm	mm	mm	mm	mm	inch	inch	inch	inch	inch
05075620001	1/2"	10-50	0.25	8-36	360	140	47	35	16.5	14	5	1	1 3/8"	5/8"
										11/64"	33/64"	27/32"		

Web link

<https://www.wera.de/en/05075620001>

Wera - Click-Torque C 1

05075620001 - 4013288193216

Wera Werkzeuge GmbH

Korzter Straße 21-25

D-42349 Wuppertal

Tel: +49 (0)2 02 / 40 45-0

E-Mail: info@wera.de

Click-Torque C 1 torque wrench with reversible ratchet, 10-50 Nm, 1/2" x 10-50 Nm



Web link
<https://www.wera.de/en/05075620001>

Wera - Click-Torque C 1
05075620001 - 4013288193216