

454/7 HF Set 1 screwdriver set T-handle screwdrivers Hex-Plus with holding function, 7 pieces



|                        |                |                               |               |
|------------------------|----------------|-------------------------------|---------------|
| <b>EAN:</b>            | 4013288214829  | <b>Size:</b>                  | 274x240x67 mm |
| <b>Part number:</b>    | 05023450001    | <b>Weight:</b>                | 1128 g        |
| <b>Article number:</b> | 454/7 HF Set 1 | <b>Country of origin:</b>     | CZ            |
|                        |                | <b>Customs tariff number:</b> | 82054000      |

- T-handle screwdriver for the transmission of particularly high tightening and loosening torque
- Ergonomic 2-component handle with finger handle recesses and pleasant surface feel for very high power transmission and fatigue-free working
- Take it easy tool finder: colour coding according to profile and size
- With additional short arm for the transmission of extremely high torques due to the leverage of the long arm
- With holding function (HF) on the long arm to securely hold the screw on the tool

T-handle screwdriver: The ideal handle shape allows the transmission of particularly high tightening and loosening moments. The ergonomic shape of the handle fills the ball of the hand well, the fingers lie securely in the softly rounded recessed grips. The whole hand comes into contact with the handle and friction losses between hand and handle are avoided. With holding function to hold the hexagonal socket screw securely on the tool. Special surface treatment for high corrosion protection and optimal fitting accuracy in the screw.

**Web link**  
<https://www.wera.de/en/05023450001>

Wera - 454/7 HF Set 1  
05023450001 - 4013288214829

Wera Werkzeuge GmbH  
Korzter Straße 21-25  
D-42349 Wuppertal  
Tel: +49 (0)2 02 / 40 45-0  
E-Mail: [info@wera.de](mailto:info@wera.de)

**Ergonomic 2-component T-handle**



The ergonomically shaped 2-component T-handle with finger recesses and pleasant surface facilitates very high power transmission and fatigue-free working.

**TORX® HF profile**



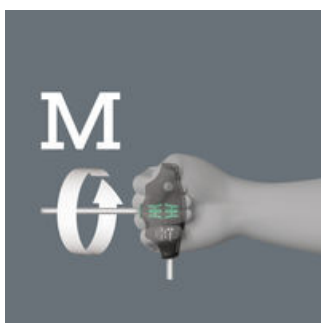
In tight assembly or disassembly situations, for example in engine compartments, it is not possible to securely hold the screw with the hand on the screwdriver, and the screw subsequently often gets lost. Lengthy searches or the loss of the screw (with the associated danger that could bring about) are the consequence. The HF tools developed by Wera are ideal because they feature an optimised geometry of the original TORX® profile. The wedging forces resulting from the surface pressure between the drive tip and the screw profile mean that the screw is securely held on the tool!

**Second arm**



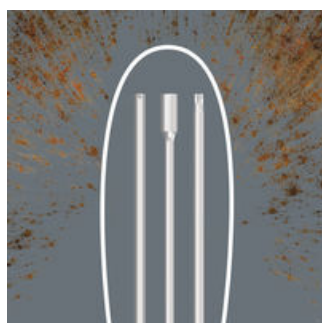
The additional short arm, which emerges laterally from the handle, allows the transmission of extremely high torques by using the long arm as a lever.

**High torque transfer**



By using the blade as an extension of your lower arm you can transfer particularly high torque.

**Corrosion protection and fitting accuracy**



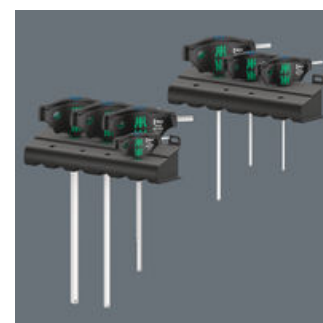
Due to the special surface treatment, the blades receive a high level of corrosion protection. The optimum fitting accuracy of the screw is also guaranteed.

**Take it easy Tool Finder**



Screwdrivers with Take it easy tool finder: colour coding according to profile and size stamp.

**With useful plastic rack**

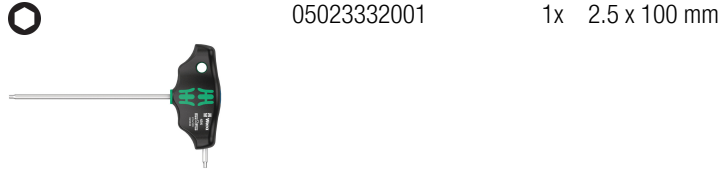


Including useful rack for well-arranged storage of the screwdrivers.

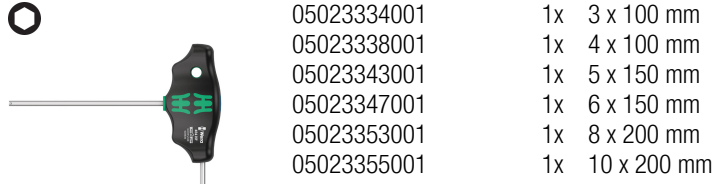
**454/7 HF Set 1 screwdriver set T-handle screwdrivers Hex-Plus with holding function, 7 pieces**

**Set contents:**

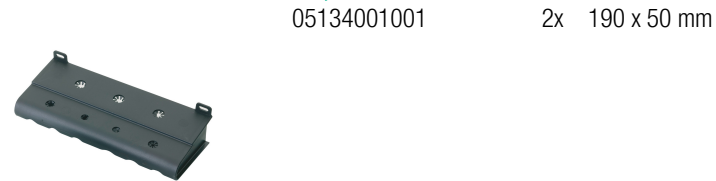
**454 T-handle hexagon screwdriver Hex-Plus, 2.5 x 100 mm**



**454 HF T-handle hexagon screwdriver Hex-Plus with holding function, 3 x 100 mm**



**Rack for Kraftform screwdrivers, 190 x 50 mm**



**Web link**

<https://www.wera.de/en/05023450001>

Wera - 454/7 HF Set 1  
05023450001 - 4013288214829

Wera Werkzeuge GmbH  
Korzter Straße 21-25  
D-42349 Wuppertal  
Tel: +49 (0)2 02 / 40 45-0  
E-Mail: [info@wera.de](mailto:info@wera.de)