



EAN:	4013288234827	Size:	218x81x51 mm
Part number:	05049065001	Weight:	472 g
Article number:	Tool-Check Automotive 1 2025	Country of origin:	CZ
		Customs tariff number:	82079030

- Very compact 38-piece tool set for manual and machine use
- Perfect for a wide variety of screw connections with Zyklop Mini with 1/4" bit mounting and/or bitholding screwdriver
- Green locking components to secure the tools
- Ideal for mobile use
- 1/4" bit ratchet, tough viscous bits, Rapidaptor holder, adaptor and 1/4" sockets
- Tough viscous bits for universal use
- Use of 1/4" sockets also possible with the Wera adaptor 870/1
- Sockets with Take it easy tool finder: colour coding by size and size stamping

38-piece set. Very compact tool set for manual and machine use. The green locking elements of the Tool-Check secure the tools during transport. Includes one 1/4" bit ratchet in drop-forged solid steel design. Fine toothing mechanism (60 teeth) for a small return angle of 6° for precise working. Easy clockwise/counterclockwise switching. Ergonomically shaped ratchet head and lever. 1/4" sockets can also be used with the Wera 870/1 adapter (1/4" external hexagon to 1/4" external square head) included in the set. 7 Zyklop sockets (1/4", for manual and machine-operated tools); with ball stop groove. Knurling at the rear end for manageability during manual screwdriving. With Take it easy tool finder: colour coding by size - for quick and easy identification of the required tool. Made of matte chrome-plated chrome-vanadium. 28 tough bits (Phillips, TORX®, TORX® B0, slotted, square head, Five Lobe and XZN) for universal use. In the very compact, functional Tool-Check.



Web link
<https://www.wera.de/en/05049065001>

Wera - Tool-Check Automotive 1 2025
 05049065001 - 4013288234827

Wera Werkzeuge GmbH
 Korzter Straße 21-25
 D-42349 Wuppertal
 Tel: +49 (0)2 02 / 40 45-0
 E-Mail: info@wera.de

Compact Tool-Check



The set offers 38 tools in an extremely space-saving box. The Tool-Check is made of premium plastic, guarantees neat arrangement, quick access to the required tools and secure transport - no risk of losing tools!

Safely stored



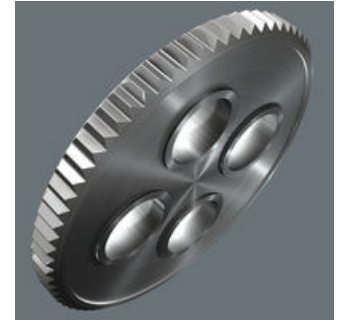
The green locking components of the Tool-Check secure the tool reliably during transport. At the same time, they are easy to operate and allow quick access to the tools.

The Zyklop Mini Ratchets



For all difficult-to-access applications.

The Zyklop Mini



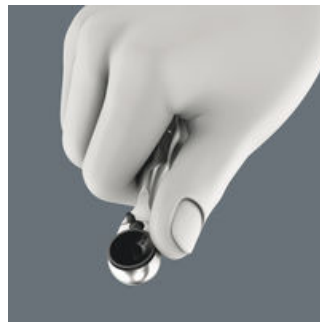
The fine tooth mechanism, with its 60 teeth, allows a small return angle of only 6° - ideal for precision work.

Simple direction change



Simple switching between left/right operations.

Rapid screwdriving



High working speeds can be attained with the Zyklop Mini bit ratchet. The thumb wheel is important, enabling more rapid screwdriving, and the lever of the Zyklop Mini only needs to be used for the final tightening of the screw.

Slim design



Its slim design makes it ideal for all particularly confined working situations.

Take it easy tool finder system



Take it easy tool finder system - with profile and size colour-coding for quick and easy tool selection. Colour-coded system for hexagon drive screws (L-Keys, Zyklop bit sockets), external hex drive screws and nuts (Joker wrenches, Zyklop sockets and Zyklop bit sockets with holding function), and TORX® drive screws (L-Keys, Zyklop bit sockets).

Web link

<https://www.wera.de/en/05049065001>

Wera - Tool-Check Automotive 1 2025
05049065001 - 4013288234827

Wera Werkzeuge GmbH
Korzter Straße 21-25
D-42349 Wuppertal
Tel: +49 (0)2 02 / 40 45-0
E-Mail: info@wera.de

Set contents:

8001 A Bit Ratchet 1/4", 1/4" x 87 mm



1x 1/4" x 87 mm



889/4/1 K Rapidaptor Universal Bit Holder, 1/4" x 50 mm



05052502001 1x 1/4" x 50 mm



870/1 Adaptor, 1/4" x 25 mm



05136000001¹⁾ 1x 1/4" x 25 mm

1) With friction ball; for manual nut spinner sockets



851/1 TZ bits, PH 1 x 25 mm



05056505001 1x PH 1 x 25 mm

05056510001 1x PH 2 x 25 mm

05056525001 1x PH 3 x 25 mm



867/1 TZ TORX® bits, TX 10 x 25 mm



05066305001 1x TX 10 x 25 mm

05066308001 1x TX 15 x 25 mm

05066310001 1x TX 20 x 25 mm

05066312001 1x TX 25 x 25 mm

05066315001 1x TX 30 x 25 mm

05066320001 1x TX 40 x 25 mm



867/1 Z TORX® B0 bits with bore hole, TX 10 x 25 mm



05066500001 1x TX 10 x 25 mm

05066505001 1x TX 15 x 25 mm

05066510001 1x TX 20 x 25 mm

05066515001 1x TX 25 x 25 mm

05066525001 1x TX 30 x 25 mm



800/1 TZ bits, 1 x 5.5 x 25 mm



05056225001 1x 1 x 5.5 x 25 mm



840/1 Z bits, 3 x 25 mm



05056315001 1x 3 x 25 mm

05056320001 1x 4 x 25 mm

05056325001 1x 5 x 25 mm

05056330001 1x 6 x 25 mm

05056335001 1x 8 x 25 mm



873/1 Five Lobe bits with bore hole, 20 x 25 mm



1x 20 x 25 mm

1x 25 x 25 mm

1x 27 x 25 mm

1x 30 x 25 mm



Web link

<https://www.wera.de/en/05049065001>

Wera - Tool-Check Automotive 1 2025
05049065001 - 4013288234827

Wera Werkzeuge GmbH
Korzter Straße 21-25
D-42349 Wuppertal
Tel: +49 (0)2 02 / 40 45-0
E-Mail: info@wera.de

860/1 XZN Multi-point bits, M 4 x 25 mm



05066150001	1x	M 4 x 25 mm
05066155001	1x	M 5 x 25 mm
05066160001	1x	M 6 x 25 mm
05066165001	1x	M 8 x 25 mm

8790 HMA Zyklus 1/4" socket, 5.5 x 23 mm



05003504001	1x	5.5 x 23 mm
05003505001	1x	6 x 23 mm
05003506001	1x	7 x 23 mm
05003507001	1x	8 x 23 mm
05003509001	1x	10 x 23 mm
05003511001	1x	12 x 23 mm
05003512001	1x	13 x 23 mm

Web link

<https://www.wera.de/en/05049065001>

Wera - Tool-Check Automotive 1 2025
05049065001 - 4013288234827

Wera Werkzeuge GmbH
Korzter Straße 21-25
D-42349 Wuppertal
Tel: +49 (0)2 02 / 40 45-0
E-Mail: info@wera.de