



EAN:	4013288039118	Size:	157x13x13 mm
Part number:	05030110001	Weight:	13 g
Article number:	1550 PH ESD Micro	Country of origin:	CZ
		Customs tariff number:	82054000

- Kraftform Micro screwdriver for cross-recess screws, Phillips
- ESD-safe tool thanks to surface resistance of $\leq 10^9$ Ohm
- Multi-component Kraftform Micro handle for fast and ergonomic screwdriving
- The Wera Black Point tip offers an exact fit and optimum corrosion protection
- Take it easy tool finder: colour coding according to profile and size
- Anti-roll feature and rotating cap for rapid twisting

ESD-safe Micro screwdriver. Dependable protection against electrostatic energy and associated damage. Rapid twisting results from fixing the hand on the head and using the fast-turning zone just below. This makes time-consuming grip adjustments unnecessary. Power zones with integrated soft sections ensure the transfer of high loosening and tightening torque; a precision zone for the right rotation angle during fine adjustment work. The Black Point tip offers optimised corrosion protection and an exact fit. Take it easy tool finder with colour coding according to profiles and size stamp - for simple and rapid accessing of the required tool.



Web link
<https://www.wera.de/en/05030110001>

Wera - 1550 PH ESD Micro
 05030110001 - 4013288039118

Wera Werkzeuge GmbH
 Korzter Straße 21-25
 D-42349 Wuppertal
 Tel: +49 (0)2 02 / 40 45-0
 E-Mail: info@wera.de

Wera ESD Tools



The requirements for ESD-safe screwdrivers are specified in the European standard DIN EN 61340-5-1. This standard also includes a handle that has to be out of a defined conductive material. The Wera products in the ESD series satisfy these standards and the even more stringent requirements demanded by some technology companies.

High protection



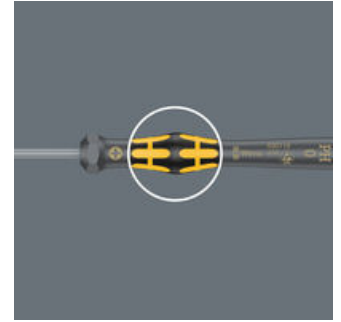
The electric surface resistance of the Wera ESD material is $\leq 10^{9}$ ohm. This securely protects components against electrostatic energy and associated damage.

Kraffform Micro handle



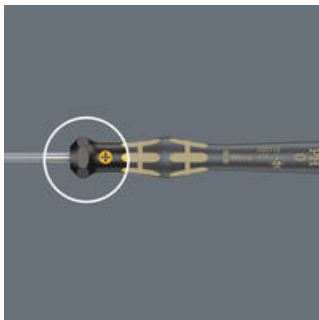
Multi-component screwdriver handle for ergonomic working.

The power zone



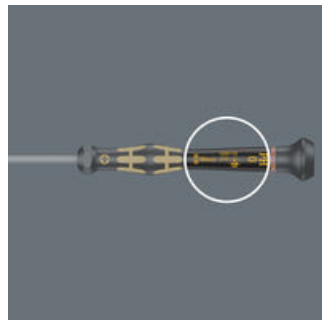
The power zone has integrated soft zones near the blade tip to ensure high torque transfer for loosening or tightening screws without losing contact with the screw.

The precision zone



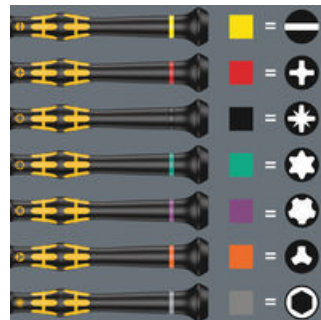
The precision zone directly above the blade gives the user a better feel for the right rotation angle during fine adjustment work.

The fast-turning zone



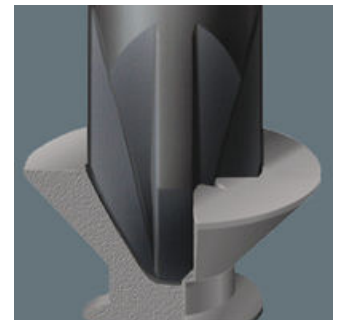
The fast-turning zone just below the rotating cap allows rapid spinning.

Take it easy Tool Finder



Screwdrivers with Take it easy tool finder: colour coding according to profile and size stamp.

Wera Black Point tip



The Wera Black Point tip and a refined hardening process ensure long service life of the tip, improved corrosion protection and an exact fit.






Web link

<https://www.wera.de/en/05030110001>

Wera - 1550 PH ESD Micro
05030110001 - 4013288039118

Wera Werkzeuge GmbH
Korzter Straße 21-25
D-42349 Wuppertal
Tel: +49 (0)2 02 / 40 45-0
E-Mail: info@wera.de

Further versions in this product family:

					
		mm	mm	mm	inch
05030117001 ^{1),2)}	PH 000	40	97	1.5/2.5	1 9/16"
05030118001 ^{1),2)}	PH 00	40	97	1.8/2.5	1 9/16"
05030110001^{1),2)}	PH 00	60	97	1.8/2.5	2 3/8"
05030119001 ³⁾	PH 0	40	97	3.0	1 9/16"
05030111001 ³⁾	PH 0	60	97	3.0	2 3/8"
05030112001	PH 1	80	97	4.0	3 1/8"

1) Optimised for Asian PH screws

2) On the output side, the blade is turned to a nominal length of 10 mm

3) Size 0 modified according to JClS 0 (Japanese Camera Industrial Standard)

Web link

<https://www.wera.de/en/05030110001>

Wera - 1550 PH ESD Micro
05030110001 - 4013288039118

Wera Werkzeuge GmbH
Korzter Straße 21-25
D-42349 Wuppertal
Tel: +49 (0)2 02 / 40 45-0
E-Mail: info@wera.de