



EAN:	4013288196347	Size:	122x83x25 mm
Part number:	05078635001	Weight:	84 g
Article number:	7772 A	Country of origin:	TW
		Customs tariff number:	82079099

- For torque wrenches from the Click-Torque X series with 9x12 mm mounting
- For 1/4" square socket wrench inserts and 1/4" connecting parts with square drive
- Fine toothing with 72 teeth
- Easy switching by knob
- Socket lock by push button

Ratchet insert, reversible, for 1/4" square socket wrench inserts and 1/4" connecting parts with square drive; for torque wrenches of the Click-Torque X series with 9x12 mm holder.

Web link
<https://www.wera.de/en/05078635001>

Wera - 7772 A
05078635001 - 4013288196347

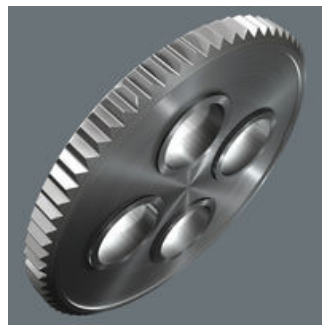
Wera Werkzeuge GmbH
Korzelter Straße 21-25
D-42349 Wuppertal
Tel: +49 (0)2 02 / 40 45-0
E-Mail: info@wera.de

Drive 9x12 mm



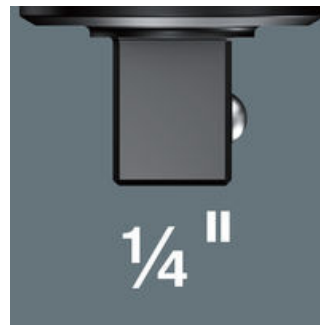
For torque wrenches from the Click-Torque X series with 9x12 mm mounting.

Small return angle



Fine-pitched with 72 teeth for a return angle of only 5°

1/4" external square



For 1/4" square socket wrench inserts and 1/4" connecting parts with square drive.

Easy switching



Easy switching by knob.

Secure socket locking





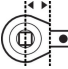



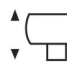
Safe socket lock via push button

Chrome vanadium steel



The insert tools are suitable for high loads thanks to their chrome-vanadium steel design.

Further versions in this product family:

							
	mm	inch	mm	mm	mm	mm	mm
05078635001	9x12	1/4"	17.5	48.6	32.0	27.9	24.7

Web link
<https://www.wera.de/en/05078635001>

Wera - 7772 A
 05078635001 - 4013288196347

Wera Werkzeuge GmbH
 Korzter Straße 21-25
 D-42349 Wuppertal
 Tel: +49 (0)2 02 / 40 45-0
 E-Mail: info@wera.de