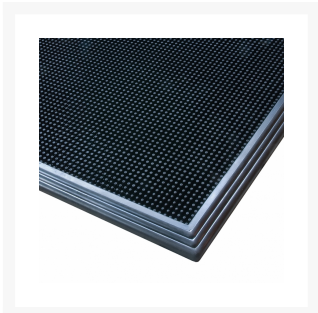
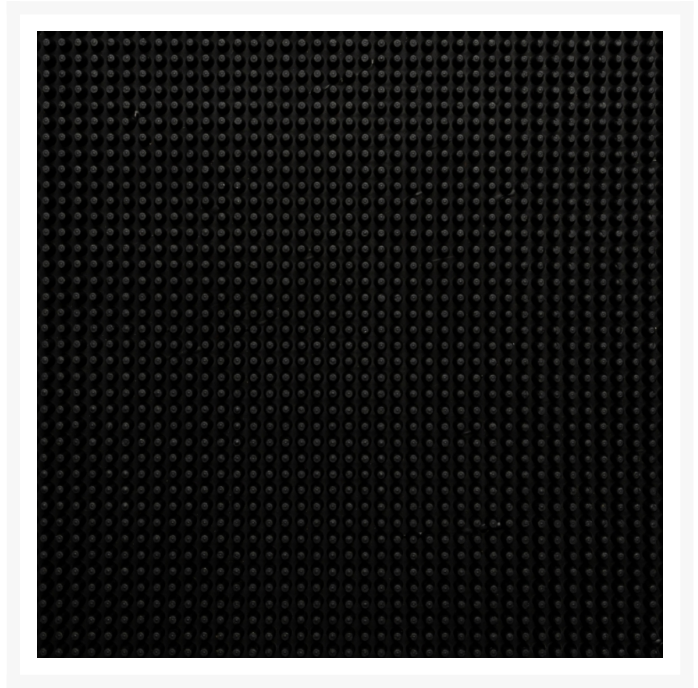
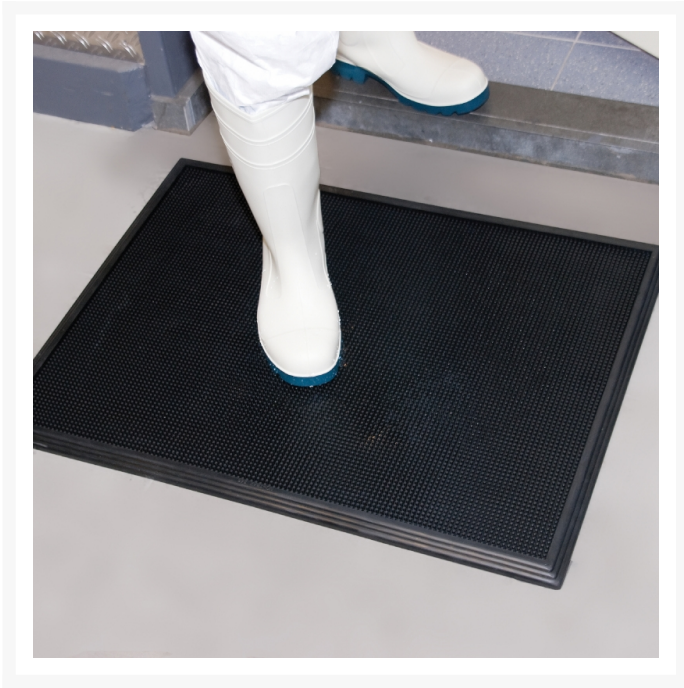


Shoe Sanitizing Door Mat, Sani-Trax[®] 346

Product Images





Short Description

- Tough rubber compound resists most chemicals and variations in temperature
- Overall mat thickness is 3/4" and holds up to one gallon of sanitizing solution
- Thick containment border stands 1/4" higher than finger scrapers to contain disinfectant and contaminants
- Thousands of flexible rubber fingers provide scrubbing action
- Suction cups on underside help to minimize mat movement
- Helps limit the spread of contaminants on non food contact surfaces. i.e. floors
- Containment wall height: 3/4"

Description

Sani-Trax® is an entrance disinfectant mat that cleans and sanitizes shoes at entrances to sensitive areas such as food processing plants or laboratories. Thousands of flexible fingers provide an automatic scrubbing action that dislodges contaminants from footwear. A thick rubber border allows the shoe sanitizing door mat to hold up to a gallon of disinfectant solution and as traffic passes, the rubber tips bend to immerse the soles of shoes in the disinfectant solution. A tough rubber compound is designed to resist most chemicals and variations in temperature, while suction cups on the underside of the mat keep it in place.

Specifications

Model No	346
Available Colors	Black
Overall Thickness	3/4
Standard sizes	18"x 24"; 24"x 32"
Group	Ergonomic, Anti-fatigue & Safety Matting
Environment	Wet/Dry Areas
Special Characteristics	Free of DOP, free of DMF, free of ozone depleting substances, free of silicone and free of heavy metals
Recommended Use	At doorways, starter rooms, packaging areas, laboratories, employee locker rooms, break rooms, refuse areas and receiving areas. Any place where spread of contamination needs to be limited.
Special Remarks	Use quaternary ammonium, iodine, chlorine, or any other sanitizer but always test it's concentration. Most sanitizers are concentrated and must be diluted before use in a footbath. Follow label directions for appropriate dilutions.
Surface	Flexible Rubber Bristles
Edges	Beveled rubber borders on all four sides
Usage Intensity	Heavy traffic
Material Specifications	Natural rubber
Process	Compression Molding
Weight Lbs/sqft	2
Fire Rating US	Pass
REACH Compliant	Reach compliant (Registration, Evaluation, Authorization and Restriction of Chemicals).

Product Options

Dimensions:

18"x 24"

24"x 32"