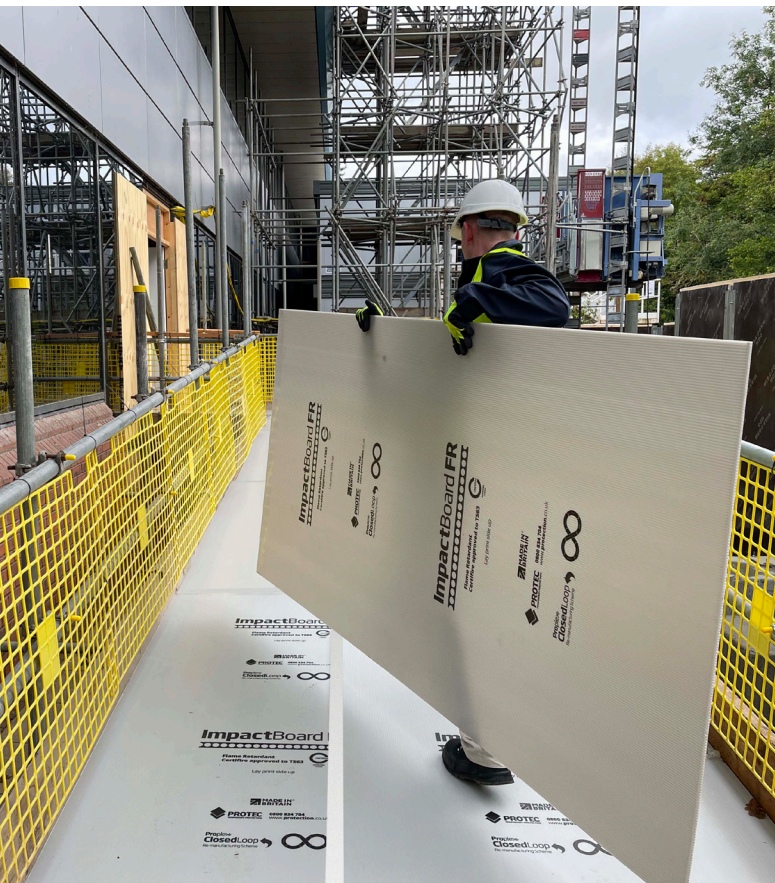


As global shortages continue and costs escalate, Protec are proud to announce the launch of our new, cost-effective alternative to plywood, hardboard and OSB.










ImpactBoard FR provides a commercial saving, when compared to traditional alternatives, and ensures your sites are protected with a flame retardant certified material. Impactboard FR doesn't warp, is easy to manoeuvre and install, contains less embodied carbon than a sheet of plywood and is 100% recyclable via our Proplex ClosedLoop Remanufacturing Scheme.



**The strength is in the structure**  
ImpactBoard FR's unique O-profile structure provides its inherent core strength



**FEATURES AND BENEFITS**

 <p><b>Flame Retardant and Certifire Approved to TS63</b> Unlike Ply, ImpactBoard FR complies with the Joint Code of Practice</p>	 <p><b>Heavy Site Traffic Protection</b> Unique O-profile composition - withstanding heavy loads and wheeled traffic</p>	 <p><b>Lightweight but Strong</b> Lightweight compared to timber alternatives, making it easy to manoeuvre around site by one person</p>
 <p><b>Moisture &amp; Chemical Resistant</b> Waterproof and resistant to chemicals - no warping unlike ply</p>	 <p><b>Fully Recyclable</b> Through the Proplex ClosedLoop Remanufacturing Scheme - avoid waste going to landfill and incineration</p>	 <p><b>No Airborne Dust</b> Sheets can be cut without creating airborne dust, negating the need for dust control and respiratory protection</p>
 <p><b>UK Manufactured</b> Reduce your carbon footprint and support local businesses</p>	 <p><b>Low Slip Potential</b> Meets EN 16165:2021: Determination of slip resistance of pedestrian surfaces - Improving site safety by reducing the risk of accidents</p>	 <p><b>Maintenance</b> Can be cleaned and mopped - designed to last the duration of your project</p>



Specify Protec **ImpactBoard FR** to ensure all your sites are fully compliant with the Joint Code of Practice, have a cost effective solution to heavy duty protection and most importantly are using a sustainable temporary protection solution.

For samples and further information, please contact me.

# Health & Safety Information Alert

## Temporary Protection



Using traditional plywood and hardboard could invalidate your insurance.

Following the Joint Code of Practice amendments in January 2023 relating to fire certification for temporary protection, all timber materials used for temporary protection must achieve Class A2-s1, d0 or better as classified under BS EN 13501-1.

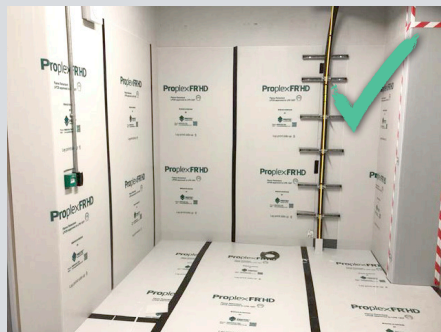
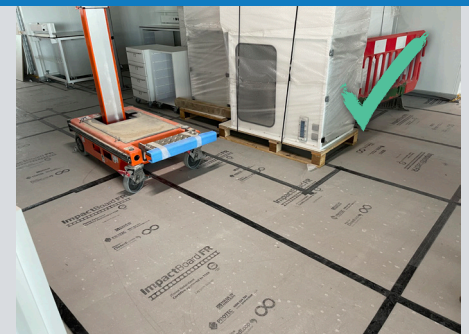
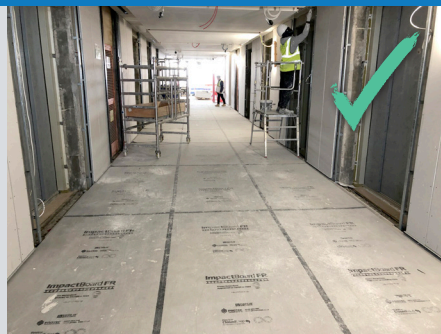
All other coverings must be certified to either Loss Prevention Certification Board (LPCB) LPS 1207 scheme or CERTIFIRE Technical Schedule 63 (TS63) scheme.

Either scheme logo and certification number must be printed on the material.



# Say bye to ply...

Protec's **ImpactBoard FR** and **ProplexFR HD** are both approved LPS1207 or TS63 certified alternatives to plywood and hardboard.



- Flame Retardant
- Waterproof
- Durable and long-lasting
- Lightweight
- Cost-effective
- Recyclable through the Proplex ClosedLoop Remanufacturing Scheme

# IMPORTANT AMENDMENTS

Joint Code of Practice  
10th Edition

Temporary Protective  
Covering Materials



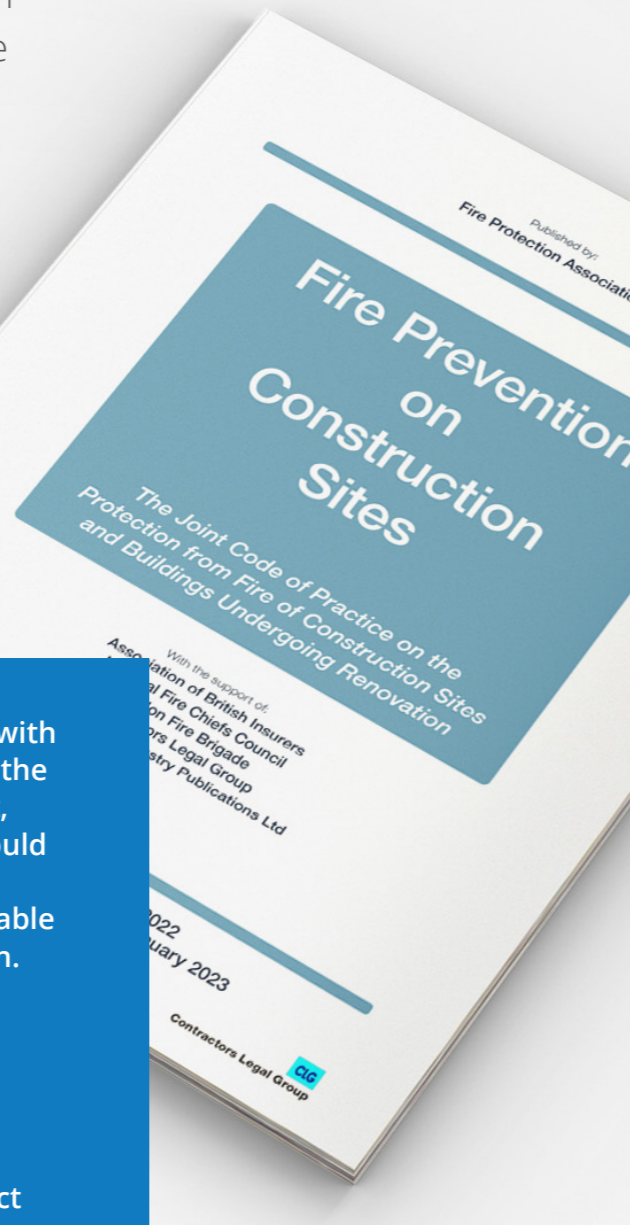
What does this mean for you?



# What is the Joint Code of Practice (JCoP):

The Fire Prevention on Construction Sites – Joint Code of Practice (JCoP) version 10.1 was published in January 2023 by the Fire Protection Association and supported by the Association of British Insurers, Contractor Legal Group (CLG) Health & Safety Executive and a number of other industry and statutory bodies.

It is the principal code used by tier 1 constructors and insurers to manage fire prevention and compliance, applied to all construction sites.



“What happens when non-compliant products are used?”

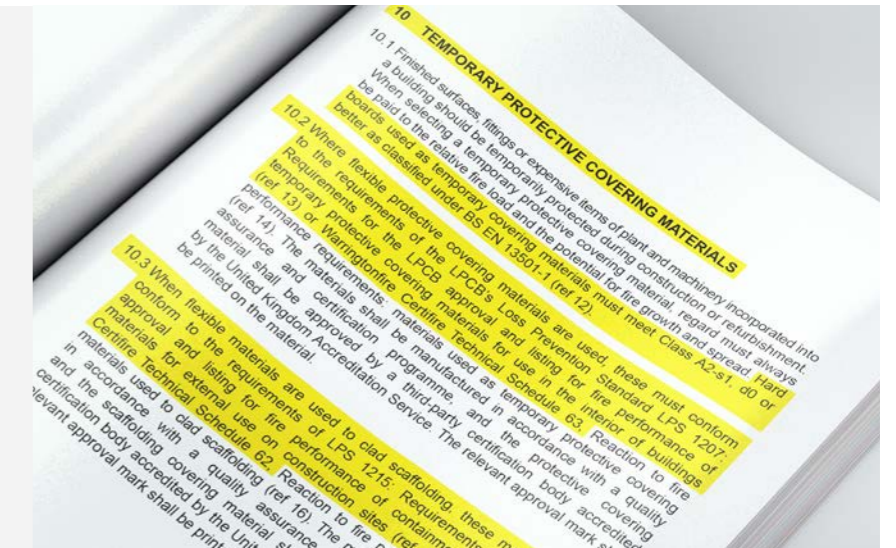
When compliance with JCoP forms part of the insurance contract, non-compliance could result in insurance ceasing to be available or being withdrawn.

“Is my project included?”

If the overall construction project value is over £2.5m, then YES!

# What are the JCoP changes for temporary protective covering materials?

Section 10.1 and 10.2 specifically address the use of Temporary Protective Covering Materials used to protect finished surfaces, fittings and expensive items during construction and refurbishment.



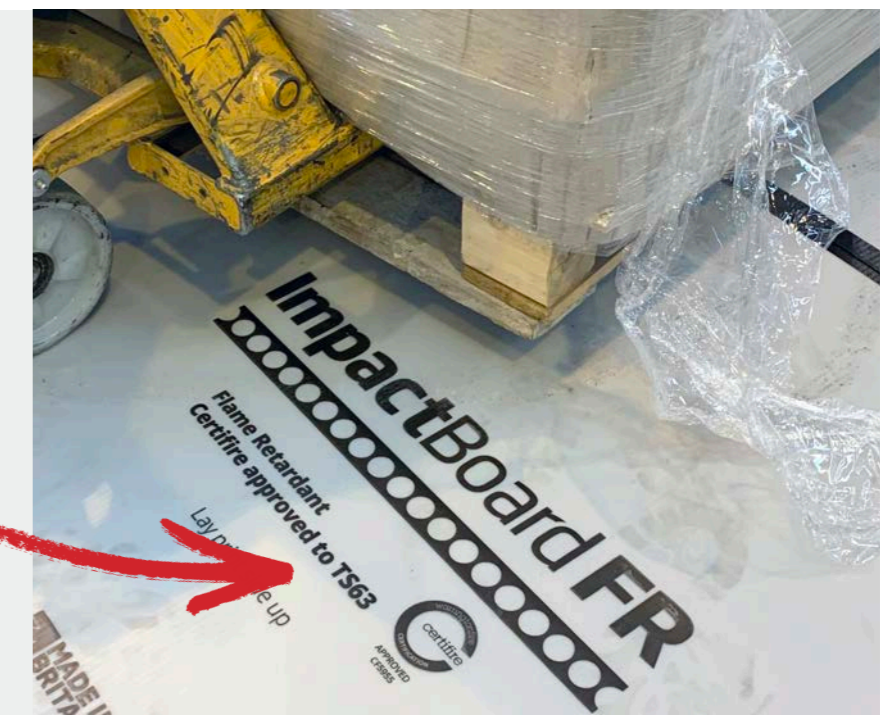
Traditional plywood and hardboard are now non-compliant and do not meet the required FR classifications needed on site.

# Identifying FR certified and non-certified



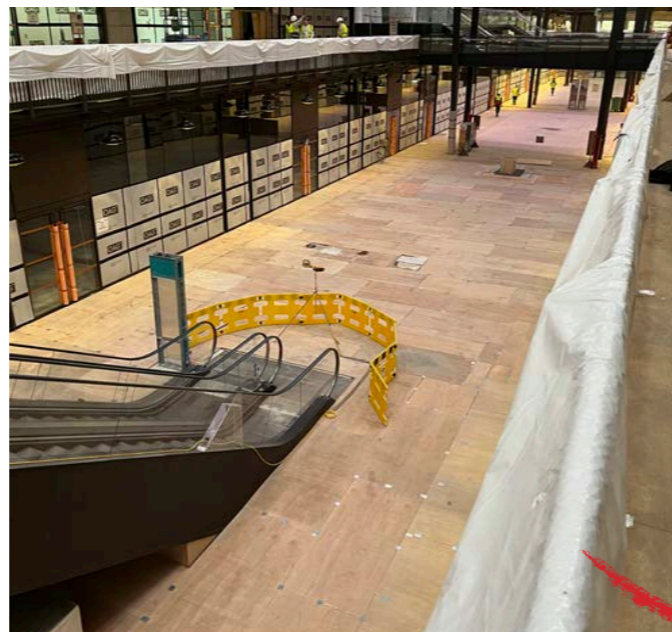
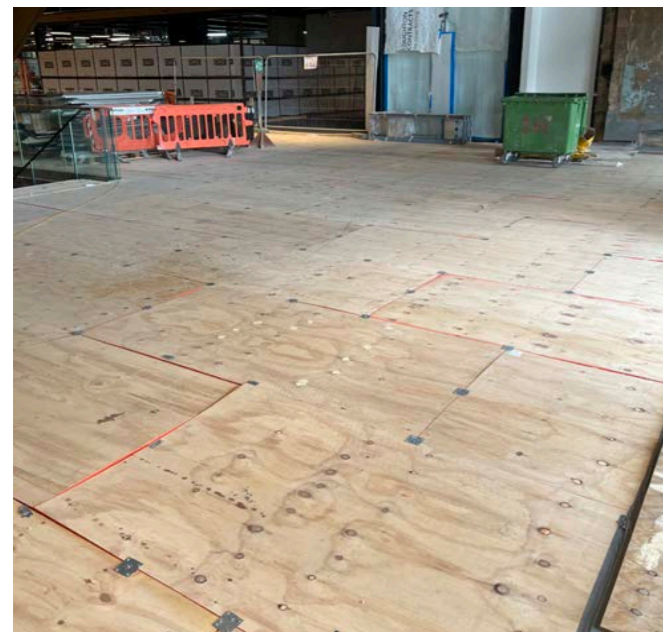
Each material **MUST** pass stringent tests to be awarded an LPS or TS63 certificate number which has to be printed onto the material enabling easy identification.

Every year our factories are audited to ensure we are manufacturing materials to the required FR standards.






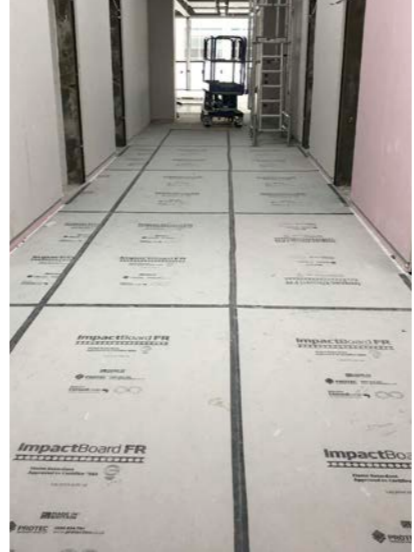


# We see a lot of sites that look like this...

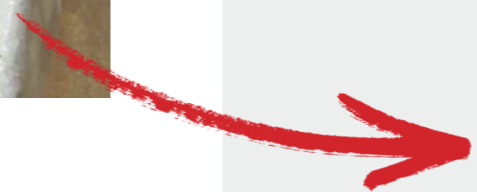
We see a lot of projects specifying plywood and hardboard as their temporary protection on site. Most FR variations of these boards are manufactured to B1 classification, which is not compliant with JCoP.



# What flame retardant temporary protection is compliant with JCoP?

It is recommended that you specify either ImpactBoard FR, ProplexFR HD or ProplexFR as certified and JCoP alternatives.

 APPROVED PRODUCT CF5955 <b>ImpactBoard FR</b>	 LPS1207 843a/03 <b>ProplexFR HD</b>	 LPS1207 843a/03 <b>ProplexFR</b>
		
<b>Heavy Traffic</b>	<b>Medium Traffic</b>	<b>Light Traffic</b>
12-18mm Plywood    ImpactBoard FR	6-12mm Plywood    ProplexFR HD	3-6mm Hardboard    ProplexFR 550

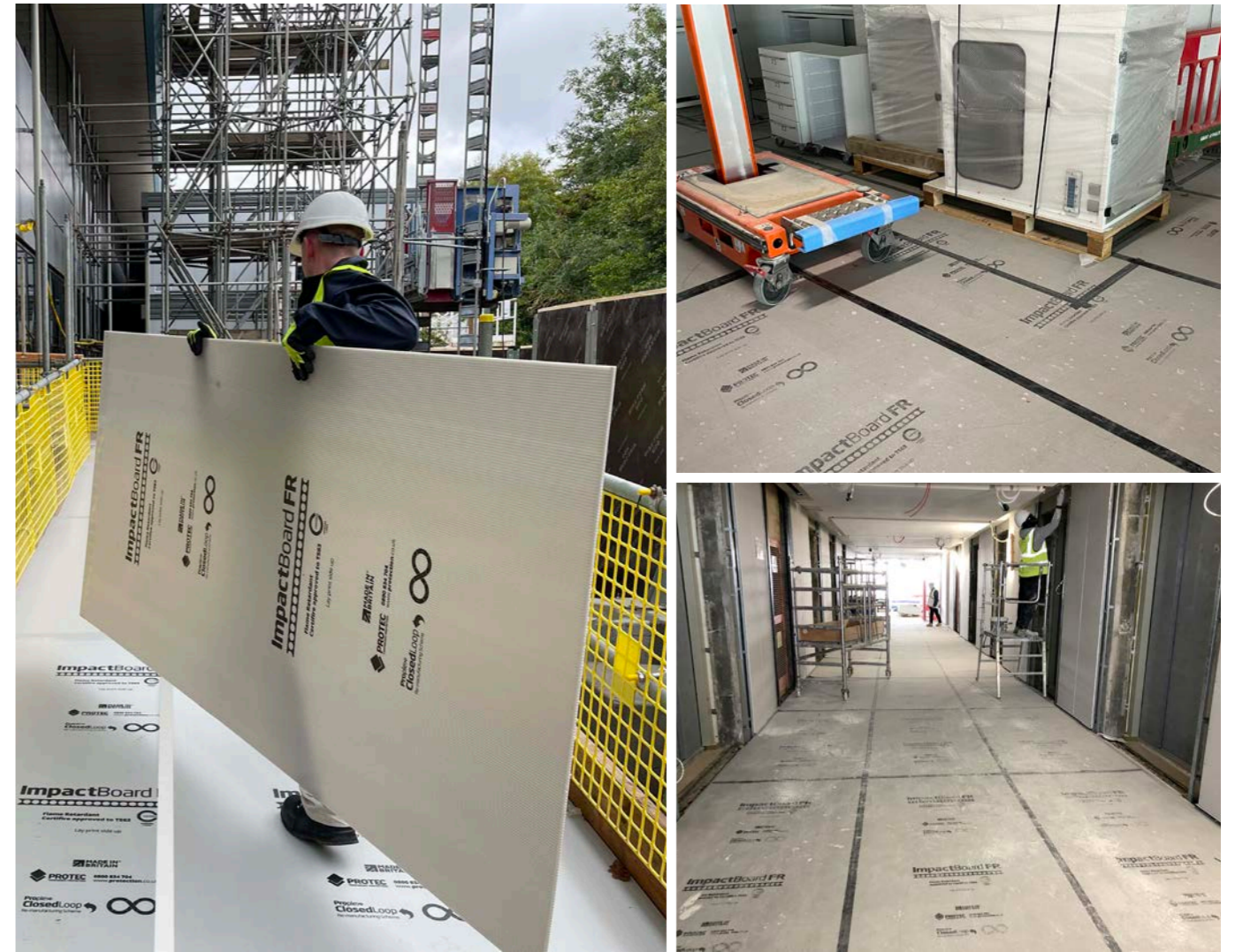


**Using traditional plywood and hardboard could invalidate your insurance as these products are non-compliant and flammable.**

# ImpactBoard FR



ImpactBoard FR is durable, sustainable and stands up to the toughest challenges in heavy traffic areas delivering fully certified, JCoP compliant, flame retardant protection.



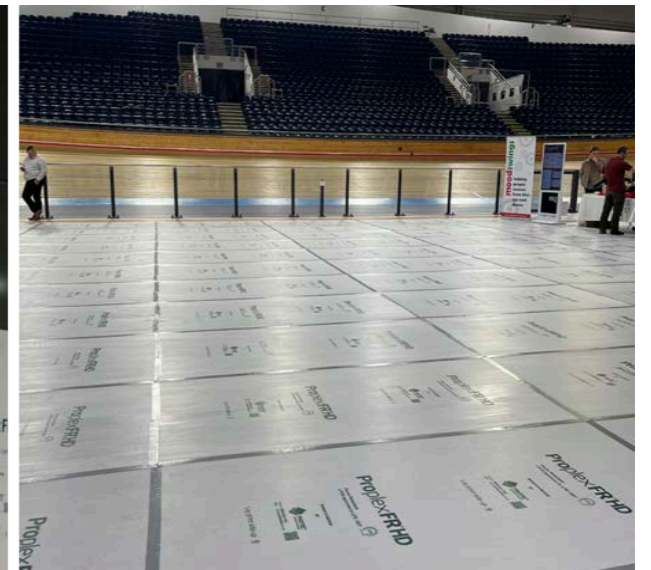
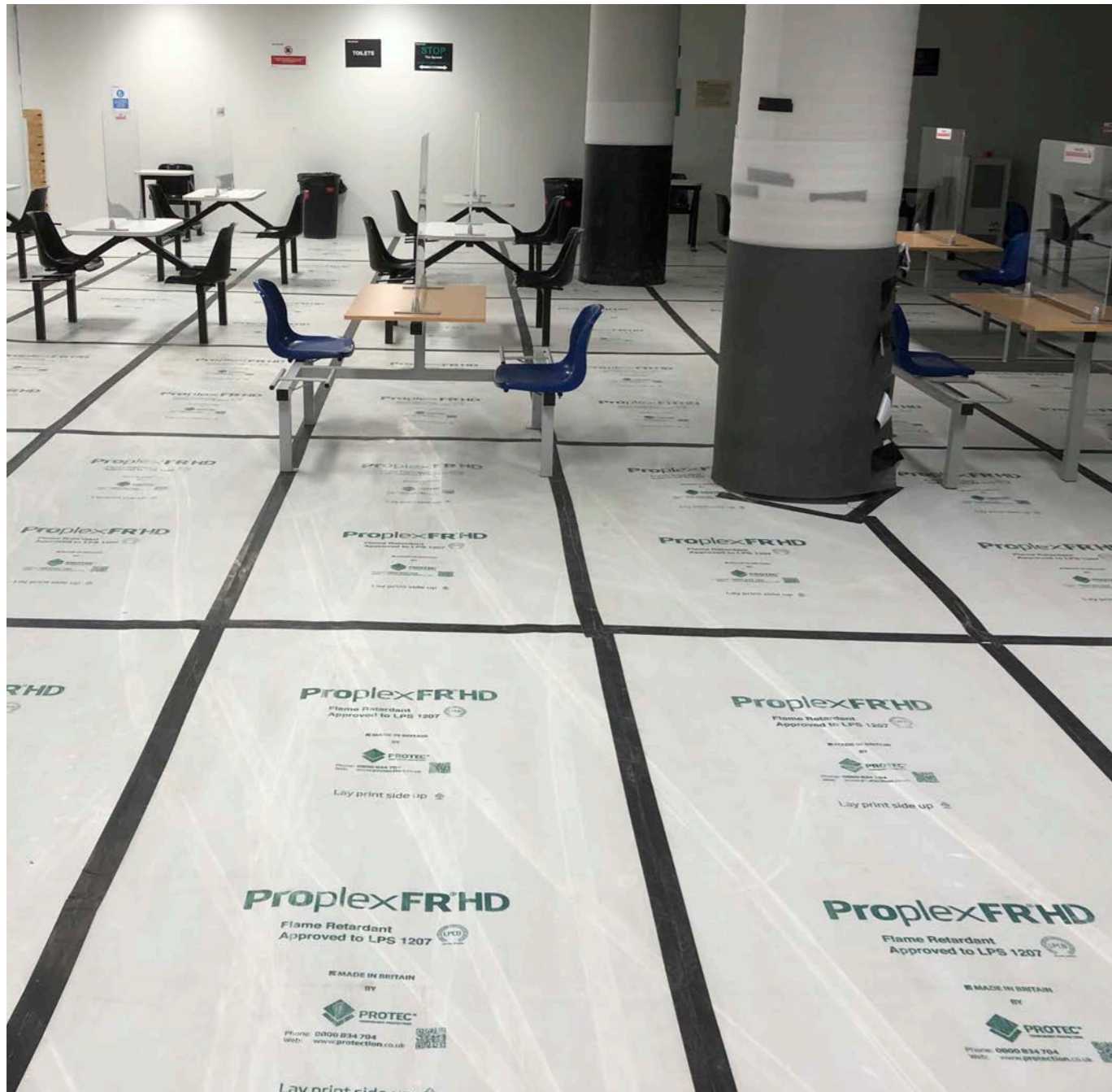
Product Attributes	ImpactBoard FR	12-18mm PLYWOOD
Flame Retardant & Approved to Certifire TS63 - Complies with the Joint Code of Practice	✓	✗
Lightweight, single person handling and installation	✓ 7.2kg	✗ 15-32kg
Dust free installation	✓	✗
Waterproof and does not warp	✓	✗
Re-usable	✓	✗
Recyclable	✓	✗
Lower cost price	✓	✗

# Proplex FR<sup>®</sup>HD



LPS1207  
843a/03

Flame retardant certified and JCoP compliant sheets, designed to provide tough, hard-wearing protection to any surface susceptible to damage.



Product Attributes	Proplex FR <sup>®</sup> HD	6-12mm PLYWOOD
Flame Retardant & Approved to LPS1207 - Complies with the Joint Code of Practice	✓	✗
Lightweight, single person handling and installation	✓ 3.5kg	✗ 8-16kg
Dust free installation	✓	✗
Waterproof and does not warp	✓	✗
Recyclable	✓	✗
Lower cost price	✓	✗

# ProplexFR



LPS1207  
843a/03

Our ProplexFR range is certified across various grammages. We recommend ProplexFR 550 as replacement for 3-6mm hardboard due to it being the JCoP compliant, flame retardant sheet for protecting finished surfaces.



Product Attributes	ProplexFR	3-6mm HARDBOARD
Flame Retardant & Approved to LPS1207 - Complies with the Joint Code of Practice	✓	✗
Lightweight, single person handling and installation	✓ 1.6kg	✗ 9-18kg
Dust free installation	✓	✗
Recyclable	✓	✗
Lower cost price	✓	✗



Ensure all your sites are fully compliant with the Joint Code of Practice by specifying Protec flame retardant temporary protection.

**We've got you covered...**

**0800 834 704**

**01625 855 600**

**[sales@protec.co.uk](mailto:sales@protec.co.uk)**

**[www.protec.co.uk](http://www.protec.co.uk)**

