

# Speed Controller with Residual Pressure Release Valve

## Series AS□□□□FE

With One-touch Fittings

RoHS

Residual pressure can be easily released with one push of button.

Eye-catching red colour release button.



### Model

Elbow style	Universal style	Port size in cylinder side	Applicable tube O.D (mm)					Cylinder bore size (mm)
			ø 4	ø 6	ø 8	ø 10	ø 12	
AS22□1FE-01	AS23□1FE-01	R(PT)1/8	●	●	●	● <sup>(1)</sup>		20, 25, 32
AS22□1FE-02	AS23□1FE-02	R(PT)1/4	●	●	●	●		20, 25, 32, 40
AS32□1FE-03	AS33□1FE-03	R(PT)3/8		●	●	●	●	40, 50, 63
AS42□1FE-04	AS43□1FE-04	R(PT)1/2				●	●	63, 80, 100

Note 1) Only elbow type

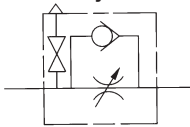
Notes) Distinction between meter-out/meter-in types by appearance

They are distinguished by the lock nut. The meter-out types is electroless nickel plated, while the meter-in type is black zinc chromate plated.

### Specifications

Proof pressure	1.5MPa
Max. operating pressure	1.0MPa
Min. operating pressure	0.1MPa
Ambient and fluid temperature	-5 to 60°C (No freezing)
Number of needle rotations	10 turns
Effective area of residual pressure release valve	0.8mm <sup>2</sup>
Applicable tubing	Nylon, Soft nylon, Polyurethane

### JIS Symbol



### Air Flow/Effective Area

Model		AS22□1FE-01 AS23□1FE-01			AS22□1FE-02 AS23□1FE-02			AS32□1FE AS33□1FE			AS42□1FE AS43□1FE	
Tube O.D.	Metric size	ø4	ø6 ø8 ø10	ø4	ø6	ø8 ø10	ø6	ø8	ø10 ø12	ø10	ø12	
Controlled (Free) flow	Air flow (d/min(ANR))	180	230	260	390	460	660	790	920	1580	1710	
	Effective area (mm <sup>2</sup> )	2.7	3.5	4	6	7	10	12	14	24	26	

Note) Supply pressure: 0.5MPa, Temperature: 20°C.

### Indication of air flow direction on body

	Sistema de salida	Sistema de entrada
Simbolo		
Simbolo		

### How to Order

AS **2** **2** **1** **1** FE **01** **06** SK **□**

- Body size**

2	1/8, 1/4
3	3/8
4	1/2
- Style**

2	Elbow
3	Universal
- Controlled method**

0	Meter-out
1	Meter-in
- Applicable tube O.D.**

04	ø4
06	ø6
08	ø8
10	ø10
12	ø12
- Hexagonal lock nut**
- Sealant**
- With residual pressure release valve**
- With One-touch fittings**
- Made to Order**

**Made to Order**

**1** Lubricant: Vaseline

**X12**

Ex.) AS2201FE-01-04SK-X12

**2** Grease-free (Seal: Fluorine Coating) + Throttle Valve (Without Check Valve)

**X21**

Ex.) AS2201FE-01-04SK-X21

Note 1) Not particle-free

Note 2) Throttle valve is only compatible with the part no. of the meter-out type.

**3** Throttle Valve (Without Check Valve)

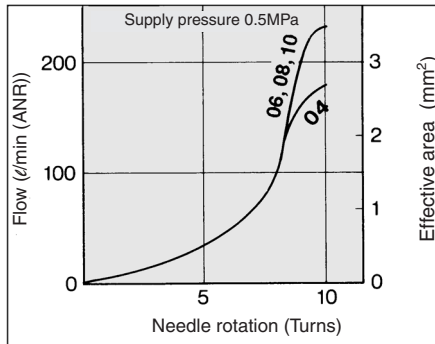
**X214**

Ex.) AS2201FE-01-04SK-X214

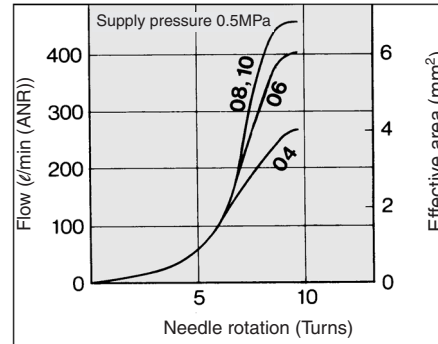
Note) Throttle valve is only compatible with the part no. of the meter-out type.

**Needle Valve/Flow Characteristics**

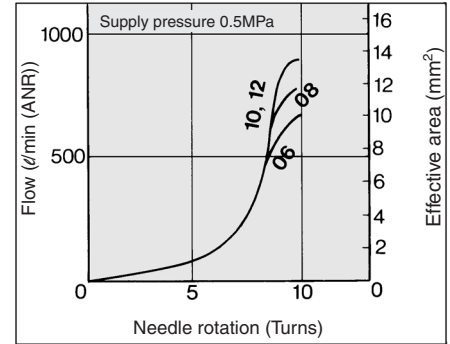
**AS2201FE-01, AS2211FE-01  
AS2301FE-01, AS2311FE-01**



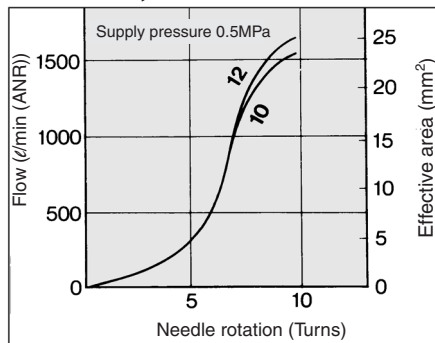
**AS2201FE-02, AS2211FE-02  
AS2301FE-02, AS2311FE-02**



**AS3201FE, AS3211FE  
AS3301FE, AS3311FE**



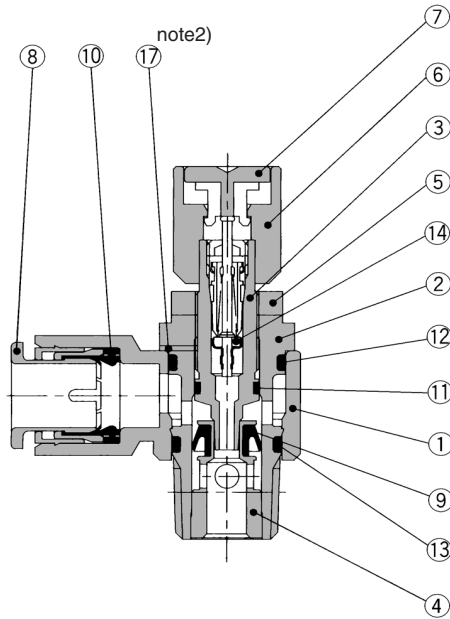
**AS4201FE, AS4211FE  
AS4301FE, AS4311FE**



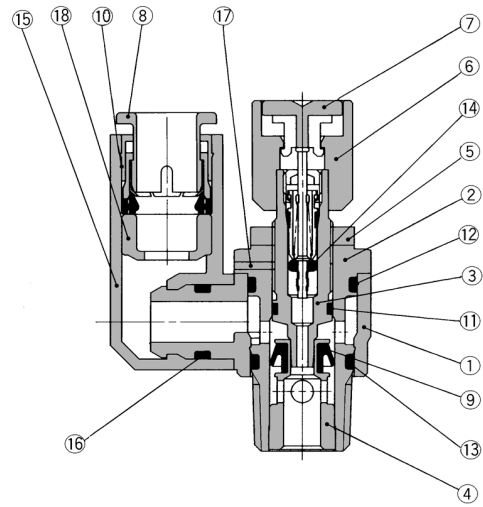
# Series AS□□□□FE

## Construction

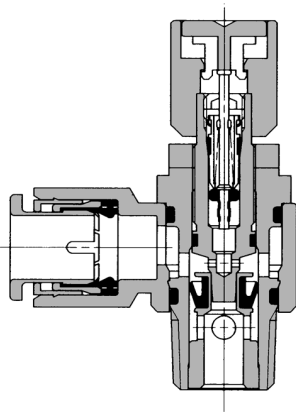
### Elbow style Meter-out



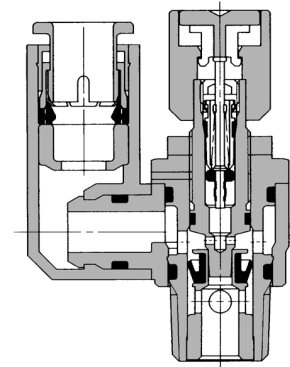
### Universal style Meter-out



### Meter-in



### Meter-in



## Component Parts

No.	Description	Material	Note
①	Body A	PBT	White
②	Body B	Brass	Electroless nickel plated
③	Needle	Brass	Electroless nickel plated
④	Seat ring	Brass	(1)
⑤	Lock nut	Steel <sup>(2)</sup>	Zinc chromated <sup>(2)(3)</sup>
⑥	Handle	Aluminum alloy	Red painted
⑦	Push button	POM	Red
⑧	Cassette	POM, Stainless steel	
⑨	U-packing	NBR	
⑩	Packing	NBR	
⑪	O ring	NBR	
⑫	O ring	NBR	
⑬	O ring	NBR	
⑭	Valve core	NBR, Brass, Stainless steel	
⑮	Elbow body	PBT	
⑯	O ring	NBR	
⑰	Jumping out preventing screw	Stainless steel	
⑱	Spacer	POM	

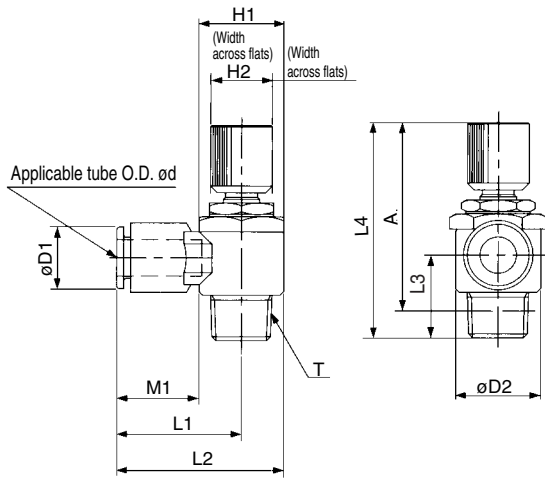
Note 1) AS□□□1FE type is electroless nickel plated

Note 2) Brass parts of AS2201FE-01 are electroless nickel plated.

Note 3) Meter-in type: Black zinc chromated

**Dimensions**

**Elbow style**

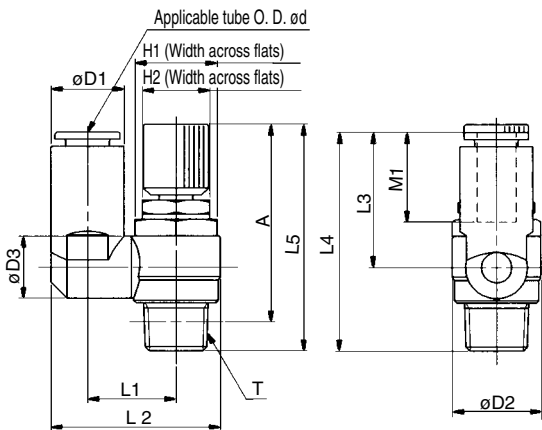


Model	Tube O.D. d	T	H1	H2	D1	D2	L1	L2	L3	L4		A*		M1	Wgt. (g)
										MAX.	MIN.	MAX.	MIN.		
AS22□1FE-01-04SK	4	1/8	12	12	9.3	14.2	20.4	27.5	13.4	53	48	49.9	44.9	12.7	26
AS22□1FE-01-06SK	6				11.6		20.4	27.5						13.5	27
AS22□1FE-01-08SK	8				15.2		25.3	32.4						18.5	29
AS22□1FE-01-10SK	10				18.5		33.1	40.2						21	31
AS22□1FE-02-04SK	4	1/4	17	14	10.4	18.5	25.2	34.4	17.7	51.7	46.7	46.2	41.2	16	36
AS22□1FE-02-06SK	6				12.8		25.2	34.4						17	37
AS22□1FE-02-08SK	8				15.2		27.2	36.4						18.5	39
AS22□1FE-02-10SK	10				18.5		33.9	43.2						21	42
AS32□1FE-03-06SK	6	3/8	19	14	12.8	23	27.8	39.3	19.8	56.7	51.7	51.5	46.5	16	57
AS32□1FE-03-08SK	8				15.2		29.5	41						18.5	60
AS32□1FE-03-10SK	10				18.5		31.9	43.3						21	62
AS32□1FE-03-12SK	12				20.9		32.8	44.3						22	64
AS42□1FE-04-10SK	10	1/2	24	17	18.5	28.6	33.6	47.9	24.5	63.8	58.8	56.5	51.5	21	103
AS42□1FE-04-12SK	12				20.9		34.6	48.9						22	105

\*Reference dimensions of R(PT) thread after being screwed in.

**Dimensions**

**Universal style**



Model	Tube O.D. d	T	H1	H2	D1	D2	D3	L1	L2	L3	L4	L5		A*		M1	Wgt. (g)
												MAX.	MIN.	MAX.	MIN.		
AS23□1FE-01-04SK	4	1/8	12	12	9.3	14.2	9.3	13.1	24.9	17.5	30.9	53	48	49.9	44.9	12.7	26
AS23□1FE-01-06SK	6				11.6		10.9	14	26.9	22.9	36.3					13.5	27
AS23□1FE-01-08SK	8				15.2		12.9	16.2	30.9	28.2	40.8					18.5	29
AS23□1FE-02-04SK	4				1/4		14	14	10.4	18.5	10.9					16.2	30.6
AS23□1FE-02-06SK	6	12.8	18.4	34		25.2			42.1		17	37					
AS23□1FE-02-08SK	8	15.2	12.9	18.3		35.2			28.2		45.1	18.5	39				
AS23□1FE-02-10SK	10	18.5	20.2	38.7		31			47.9		21	42					
AS33□1FE-03-06SK	6	3/8	19	14	12.8	23	12.9	20.6	38.5	25.2	45	56.7	51.7	51.5	46.5	17	57
AS33□1FE-03-08SK	8				15.2		39.7	28.2	48	18.5	60						
AS33□1FE-03-10SK	10				18.5		43.7	32.6	52.4	21	62						
AS33□1FE-03-12SK	12				20.9		44.9	34.4	54.2	22	64						
AS43□1FE-04-10SK	10	1/2	24	17	18.5	28.6	16.2	25.8	49.4	32.6	57.1	63.8	58.8	56.5	51.5	21	103
AS43□1FE-04-12SK	12				21.7		19.4	26.8	52	36.3	60.8					22	105

\*Reference dimensions of R(PT) thread after being screwed in.